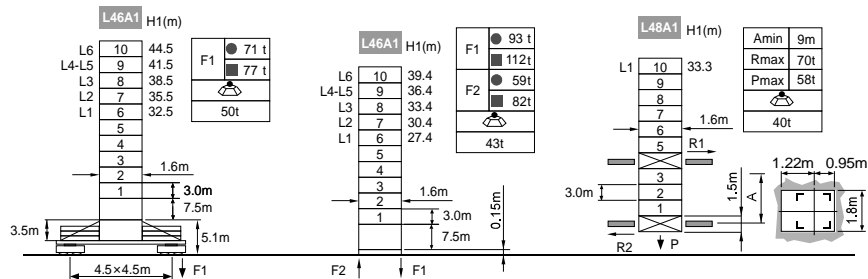


臂根铰点高度 Jib root hinge height

如果需要特殊高度请与我们联系。Please consult with us in case higher freestanding height needed.



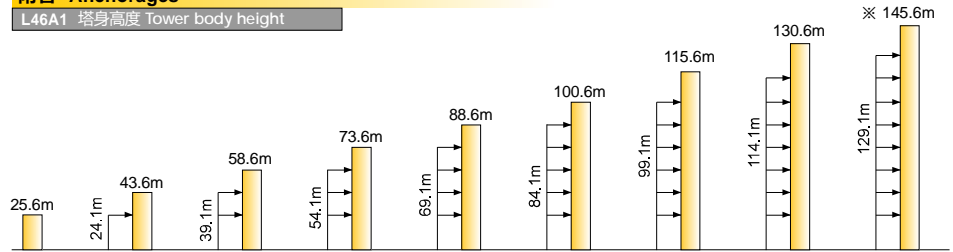
● 工作状态 In service F 反力 Reactions ■ 非工作状态 Out of service
自重 (不含平衡重及压重) total weight of free standing height (excludes counter weight and ballast)

负荷特性 Load diagrams

R	falls	R(C _{MAX})	C _{MAX}	m	15	17	20	22	25	27	30	32	35	37	40	42	45	47	50
50m	☺	4.1 - 40.3	4	t	4.0	4.0	4.0	4.0	4.0	4.0	4.0	4.0	4.0	4.0	4.0	3.7	3.2	2.9	2.5
	☹	4.1 - 32.1	6	t	6.0	6.0	6.0	6.0	6.0	6.0	6.0	6.0	5.1	4.7	4.1	3.7	3.2	2.9	2.5
45m	☺	3.7 - 41.9	4	t	4.0	4.0	4.0	4.0	4.0	4.0	4.0	4.0	4.0	4.0	4.0	4.0	3.9	3.4	
	☹	3.7 - 33.0	6	t	6.0	6.0	6.0	6.0	6.0	6.0	6.0	6.0	5.4	4.9	4.3	3.9	3.4		
40m	☺	3.2 - 40.0	4	t	4.0	4.0	4.0	4.0	4.0	4.0	4.0	4.0	4.0	4.0	4.0	4.0	4.0		
	☹	3.2 - 27.8	8	t	8.0	8.0	8.0	8.0	8.0	8.0	8.0	8.0	7.2	6.6	5.7	5.2	4.5		
35m	☺	2.8 - 35.0	4	t	4.0	4.0	4.0	4.0	4.0	4.0	4.0	4.0	4.0	4.0	4.0	4.0			
	☹	2.8 - 28.6	8	t	8.0	8.0	8.0	8.0	8.0	8.0	8.0	8.0	7.2	6.6	5.7	5.2	4.5		
30m	☺	2.3 - 30.0	4	t	4.0	4.0	4.0	4.0	4.0	4.0	4.0	4.0	4.0	4.0	4.0	4.0			
	☹	2.3 - 29.4	8	t	8.0	8.0	8.0	8.0	8.0	8.0	8.0	8.0	7.2	6.6	5.7	5.2	4.5		
25m	☺	1.9 - 25.0	4	t	4.0	4.0	4.0	4.0	4.0	4.0	4.0	4.0	4.0	4.0	4.0	4.0			
	☹	1.9 - 25.0	8	t	8.0	8.0	8.0	8.0	8.0	8.0	8.0	8.0	7.2	6.6	5.7	5.2	4.5		

附着 Anchorages

L46A1 塔身高度 Tower body height



※ 超过此高度请联系我们 Over this height please contact us

机构 Mechanisms

☺	50LVF20	☺	m/min	0 ~ 44	0 ~ 66	37kW	440m >440m※
		t	4	2			
		☺	m/min	0 ~ 29	0 ~ 44		
		t	6	3			
		☺	m/min	0 ~ 22	0 ~ 33		
		t	8	4			
△	60LVF20	☺	m/min	0 ~ 59	0 ~ 88	45kW	720m >720m※
		t	4	2			
		☺	m/min	0 ~ 39	0 ~ 58		
		t	6	3			
		☺	m/min	0 ~ 30	0 ~ 44		
		t	8	4			
☺	50VVF30	m/min	3min10s		30kW		
☺	RCV95	rpm	0 ~ 0.6		2×5.5kW		
☺	RT324	m/min	0 ~ 25		2×5.2kW		
⚡	380V 50Hz(±5%) 440V 60Hz(±5%)		50LVF20: 110kVA 60LVF20: 120kVA		kVA		

※ 请联系我们 Please consult us △ 可选 Option