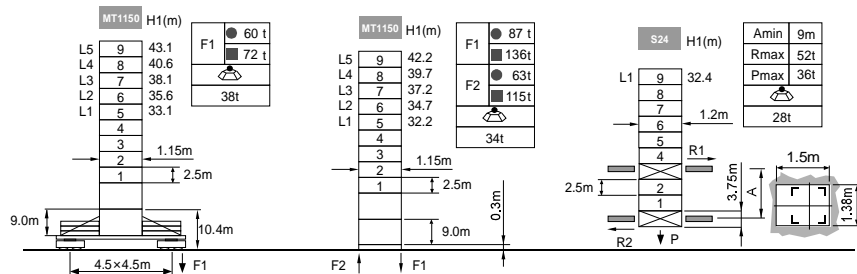


**臂根铰点高度 Jib root hinge height**

如果需要特殊高度请与我们联系。Please consult with us in case higher freestanding height needed.



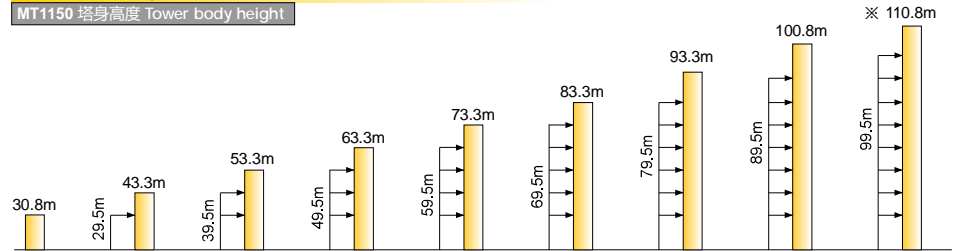
● 工作状态 In service F 反力 Reactions ■ 非工作状态 Out of service  
 ⊕ 自重 (不含平衡重及压重) total weight of free standing height (excludes counter weight and ballast)

**负荷特性 Load diagrams**

R	falls	R(C <sub>max</sub> )	C <sub>max</sub>	m	10	12	15	17	20	22	25	27	30	32	35	37	40
40m	☺	3.1-28.9	3.0	t	3.0	3.0	3.0	3.0	3.0	3.0	3.0	3.0	2.8	2.4	2.0	1.8	1.5
	☹	3.1-22.6	4.5	t	4.5	4.5	4.5	4.5	4.5	4.5	4.5	3.8	3.3	2.8	2.4	2.0	1.8
	☹	3.1-18.5	6.0	t	5.3	5.3	5.3	5.3	5.3	4.6	3.8	3.3	2.8	2.4	2.0	1.8	1.5
35m	☺	2.7-29.7	3.0	t	3.0	3.0	3.0	3.0	3.0	3.0	3.0	3.0	3.0	2.6	2.2		
	☹	2.7-23.1	4.5	t	4.5	4.5	4.5	4.5	4.5	4.5	4.5	3.9	3.4	2.9	2.6	2.2	
	☹	2.7-18.8	6.0	t	5.5	5.5	5.5	5.5	5.5	4.6	3.9	3.4	2.9	2.6	2.2		
30m	☺	2.2-30.0	3.0	t	3.0	3.0	3.0	3.0	3.0	3.0	3.0	3.0	3.0				
	☹	2.2-23.6	4.5	t	4.5	4.5	4.5	4.5	4.5	4.5	4.5	3.9	3.4	2.9			
	☹	2.2-19.2	6.0	t	5.5	5.5	5.5	5.5	5.5	4.6	3.9	3.4	2.9				
25m	☺	1.8-25.0	3.0	t	3.0	3.0	3.0	3.0	3.0	3.0	3.0						
	☹	1.8-23.6	4.5	t	4.5	4.5	4.5	4.5	4.5	4.5	3.9						
	☹	1.8-19.2	6.0	t	5.5	5.5	5.5	5.5	5.5	4.6	3.9						
20m	☺	1.4-20.0	3.0	t	3.0	3.0	3.0	3.0	3.0								
	☹	1.4-20.0	4.5	t	4.5	4.5	4.5	4.5	4.5								
	☹	1.4-19.2	6.0	t	5.5	5.5	5.5	5.5	5.5								

**附着 Anchorages**

MT1150 塔身高度 Tower body height



※ 超过此高度请联系我们 Over this height please contact us

**机构 Mechanisms**

☺	30LVF15	☺	m/min	0 ~ 42	0 ~ 64	22kW	350m >350m※
		☹	t	3	1.5		
		☺	m/min	0 ~ 28	0 ~ 42		
		☹	t	4.5	2.25		
☹	40VVF20	☺	m/min	1min30s		30kW	
		☹	t	6			
☺	RCV95	☺	rpm	0 ~ 0.8		5.5kW	
☹		t	28t				
☺	RT324	☺	m/min	0 ~ 25		2×5.2kW	
☹		t	28t				
☺	380V 50Hz(±5%) 440V 60Hz(±5%)			85kVA		kVA	

※ 请联系我们 Please consult us △ 可选 Option